



LANGUAGE UK 

ENGLISH AND CULTURE COURSE

© 2024
LanguageUK

Accredited by the
 BRITISH
COUNCIL
for the teaching
of English in the UK

 ENGLISH
UK

 BAC
BRITISH ACCREDITATION COUNCIL

 OET
OCCUPATIONAL ENGLISH TEST

 OET
PROFICIENCY

 SLC



**WELCOME
TO
CANTERBURY**



Canterbury is a Medieval city set in the heart of Kent and home to 3 universities and the beautiful Canterbury Cathedral.

LOCATION

There is nowhere quite like Canterbury. Our medieval walled city has been hosting visitors for over 1,000 years, so a warm welcome for any 'pilgrim' is guaranteed.

This summer, embrace the floral displays and warm weather as you wind your way through our cobbled streets. Drink in the historic sights and shop at a huge mix of independent and high-street shops and cosy cafes.

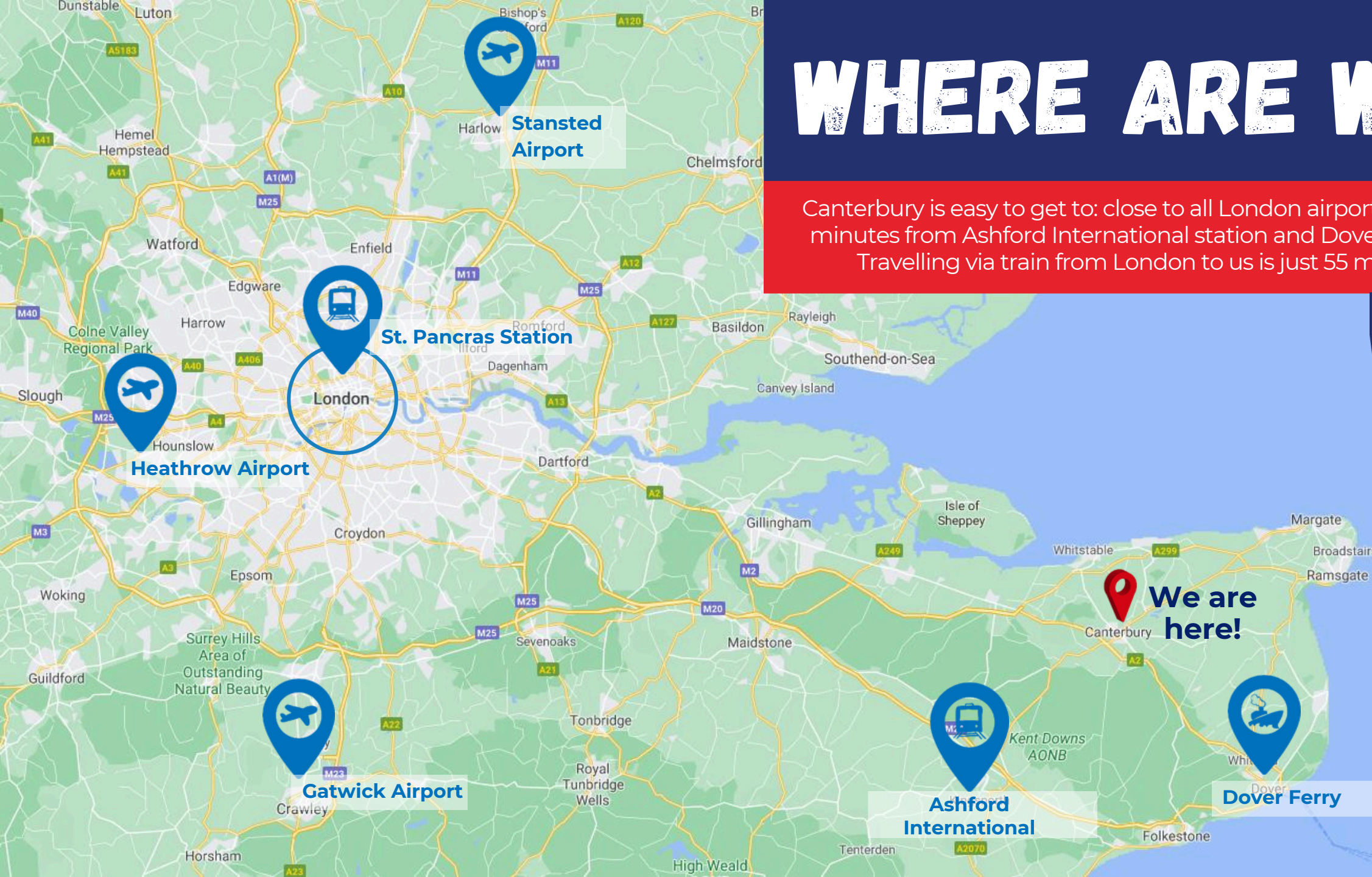


What can we offer you?

- 1. Ancient Architecture:** Canterbury boasts historical buildings that date back centuries. Notably, the Westgate Towers, England's largest medieval gateway, which stands as a testament to its rich past. The Eastbridge Hospital, with remarkable architecture from 1190 and the partially preserved St Augustine's Abbey (dating back to 613 AD) offer glimpses into the city's history.
- 2. Stunning Cathedral:** Canterbury Cathedral is a must-see. With parts dating from the 11th century, it's an awe-inspiring structure with Norman, Romanesque and Gothic architecture. As the city's top visitor attraction, it's well worth exploring.
- 3. Shopping Experience:** While Canterbury is very charming, it also offers modern shopping. Whitefriars, an open-air shopping centre, features popular brands, while the King's Mile area hosts numerous independent businesses, including jewellers, cafes and artisan shops.
- 4. Arts and Culture:** The city celebrates the arts. The Marlowe Theatre, named after playwright Christopher Marlowe, hosts exciting shows, plays, and concerts.
- 5. Easy Access:** Less than an hour from London by high-speed rail, Canterbury is an ideal year-round destination. Explore cobbled streets, historic buildings, award-winning vineyards and ancient woodland as part of our special learning experience.

WHERE ARE WE?

Canterbury is easy to get to: close to all London airports and just 14 minutes from Ashford International station and Dover Ferry port. Travelling via train from London to us is just 55 minutes.



Only 20 minutes
to the East Kent
beaches



Just 55
minutes
from London



Close to the
Dover Ferry
port

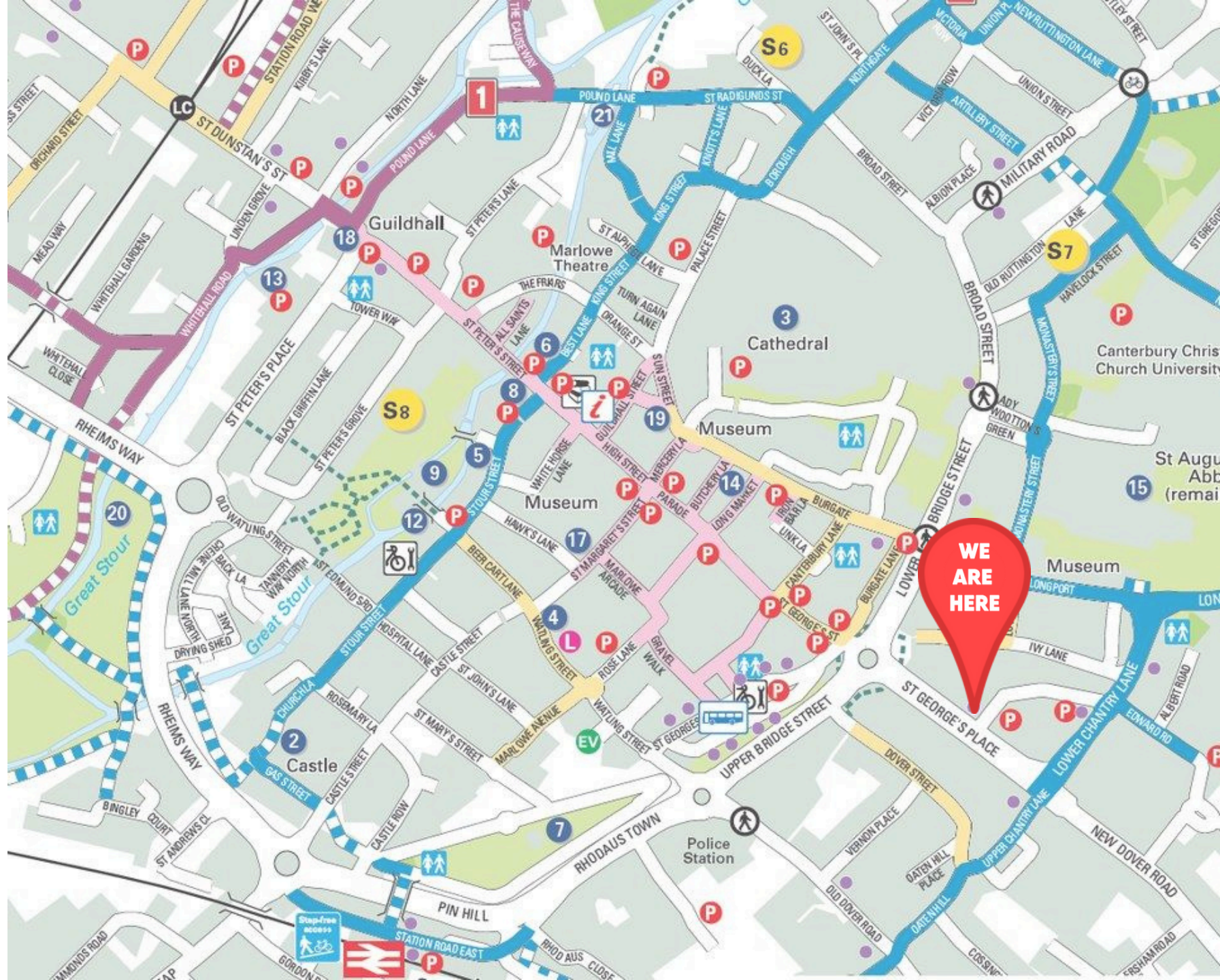


**THE SCHOOL
IS JUST A
3-MINUTE WALK
FROM THE CITY CENTRE**

Canterbury is easy to get to.

It's close to all London airports and just 30 minutes from Ashford International train station and Dover ferry port.

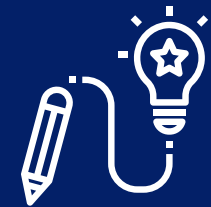
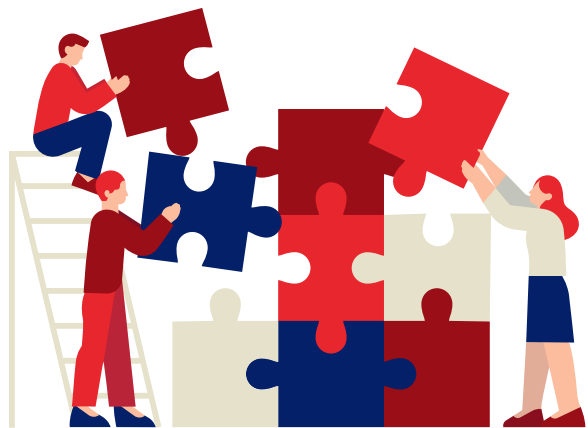
Canterbury has two train stations and can be reached from London Victoria or St. Pancras International train stations.



**DISCOVER
THE BRITISH
WAY OF LIVING
WHILE LEARNING
ENGLISH**

Learn a language
without borders and
have a rich cultural
experience in the
beautiful Kent setting





OVER 40'S ENGLISH AND CULTURE

This course is designed for those adults who would like to learn more about British culture and traditions while improving their knowledge of the English language in an environment of Britishness while becoming more confident when using it in conversations.

The course focuses more on speaking, listening and fluency skills. There will be many opportunities to discuss a variety of interesting topics and expand students' vocabulary enriching it with many colloquial expressions that are used in everyday English.

Our goal is to make you sound more natural during social interaction, whether formal or informal. There will be plenty of opportunities to meet other people, socialise and enjoy the quintessential Britishness of life in Canterbury and beyond. Afternoon activities if chosen, will be an extension of morning classes with preparation and history and quirky facts, all explained in a relaxed classroom environment.



DESIGNED FOR

- Adults aged 40 or over who are a minimum A2 level.
- Adults who'd like to improve their speaking/listening skills while learning about British culture.
- Adults who'd like to take part in activities and "talking trips" to enrich their cultural knowledge of Britain and use the English language in a variety of situations.
- Closed groups (welcome any time of the year - please enquire): a specific programme can be designed around the students' requests. Some requests may come at an extra cost. The maximum group size for a closed group is 5 participants.
- 40+ English and Culture course - 15 hours of tuition per week (all lessons are of 45 minutes).

Morning classes:

Students will be able to choose from a variety of themes and ideas presented by their teacher and are welcome to suggest their own ideas.

Each morning is carefully planned to encourage "natural" speaking. Some guided practice and attention to improvement in areas such as grammar, pronunciation and vocabulary will be given in class.

Students will be invited to record their daily practice and thoughts.

Afternoon activities:

In the afternoons, students will take part in a selection of activities and trips, and this is an extension of their morning class. Teachers or activity leaders will accompany and encourage students to interact with the group and have interesting conversations reusing the language learnt in class whenever possible.

Saturday day trip

The course includes a day trip for each Saturday, including a guided tour in the morning and free time in the afternoon to let participants explore more of Britain.

*COURSE LENGTH:
1 - 2 WEEKS, 15 HOURS
SUITABLE FOR 40 +,
SUBJECT TO AVAILABILITY*

	Monday	Tuesday	Wednesday	Thursday	Friday
9:30 11:00	General English	General English	General English	General English	General English
11:00 11:30	Break				
11:30 13:00	General English	General English	General English	General English	General English
13:00 14:00	Lunch Time				
14:00 16:00	Canterbury Tour	Chartham Vineyard Tour	Free Time	Broadstairs Excursion	Canterbury Cathedral Visit



Homestay Accommodation

All our homestay accommodation has been personally vetted by our Accommodation Officer. All Canterbury homestay accommodation is within walking distance of the school (from 5 to 25 minutes) or a short bus ride away. We have increased our homestay capacity by offering excellent accommodation in a nearby town called Faversham, a 10-minute train ride away. This has proved to be extremely popular with our junior groups. Travel tickets are included for Faversham homestay students.

- Private or shared bedrooms
- Breakfast and evening meals daily
- Free Wi-Fi access

Student Residence

Our recently renovated residential accommodation is located at the rear of the school garden. Each room has been decorated to a high standard and includes:

- Bed linen
- A desk and chair
- Single or twin bed and mattress
- Wardrobe
- Shelves for books
- Free Wi-Fi
- Free use of a fully equipped shared kitchen





LANGUAGE UK

Accredited by the
BRITISH COUNCIL
for the teaching
of English in the UK



E-mail Address:
info@languageuk.com
9 St. George's Place Canterbury
Kent CT1 1UT United Kingdom
www.languageuk.com